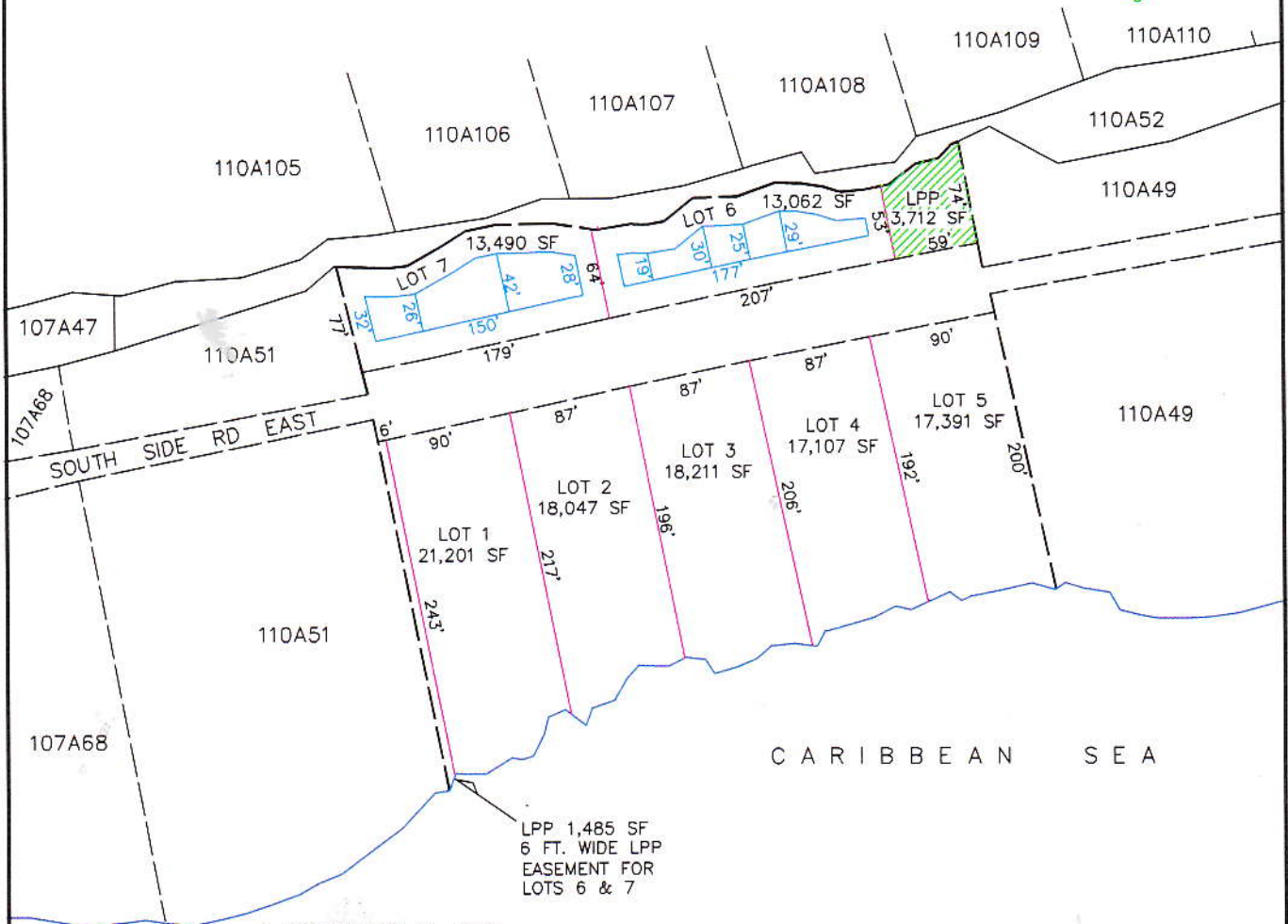


PROPOSED SUBDIVISION PLAN OF
BLOCK 110A, PARCEL 50
 CAYMAN BRAC
 BRITISH WEST INDIES
ROLAND BODDEN & CO. LTD.
 SCALE: 1" = 120'

ALL AREAS AND DIMENSIONS ARE APPROXIMATE



* UPDATED: MAY 31, 2010

ROLAND BODDEN & CO. LTD.
 LICENSED LAND & ENGINEERING SURVEYORS
 P.O. BOX 2313, GRAND CAYMAN
 KY1-1106, CAYMAN ISLANDS
 TEL: 949-5177 / FAX: 949-0792
 EMAIL: rjb@candw.ky
 DRAWN BY: O'NEIL ASHMAN
 DATE DRAWN: JANUARY 8, 2010

NOTE
 BOUNDARIES SHOWN ON THIS
 PLAN ARE NOT FINAL UNTIL FIXED
 IN ACCORDANCE WITH SECTION 18
 OF THE REGISTERED LAND LAW.

ALL AREAS AND DIMENSIONS
 ARE APPROXIMATE.

© THIS PLAN WAS PREPARED EXCLUSIVELY
 FOR JOHN BALL AND NO PERSON
 MAY COPY, REPRODUCE OR ALTER THIS
 PLAN WITHOUT THE WRITTEN PERMISSION OF
 ROLAND BODDEN & CO. LTD.

DRAWING #: 110A50D4.dwg JOB #: 10-008